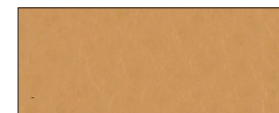
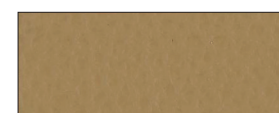


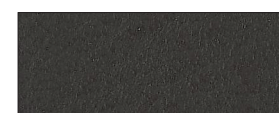
CINNEMON IC000222



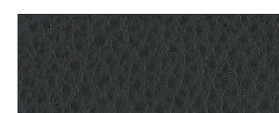
LION IC000221



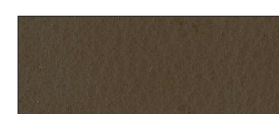
TAN IC000295



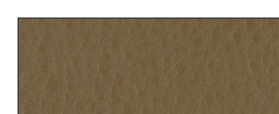
ROOT IC000298



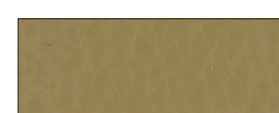
EBONY IC000293



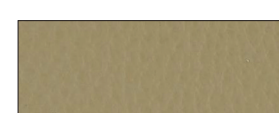
PEATMOOS IC000217



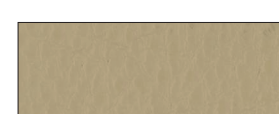
ANTILOP IC000216



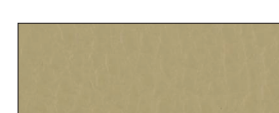
AVANA IC000215



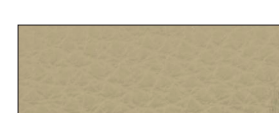
BUCKSKIN IC000213



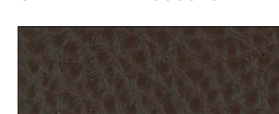
CLAY IC000214



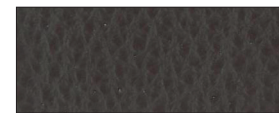
MOUTON IC000297



CAFFELATTE IC000292



CHESTNUT IC000231



CIOCCO IC000230



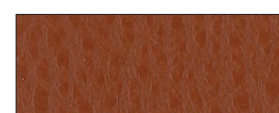
HENNA IC000299



VOLCANO IC000252



JASPER IC000227



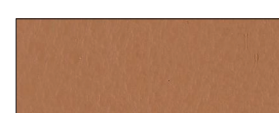
CROUCS IC000300



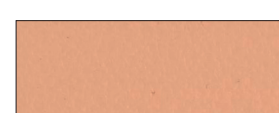
HEZELNUT IC000289



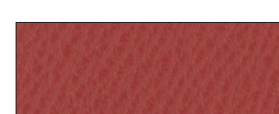
COTTO IC000228



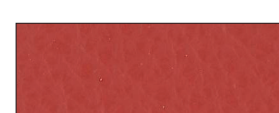
POTTERY IC000226



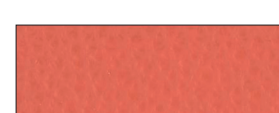
CORIANDER IC000225



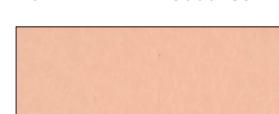
POT-PURRY IC000233



BEGONIA IC000240



FOND-DE-TEIN IC000239



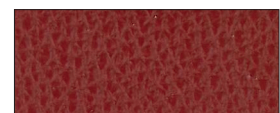
PILL IC000237



FACEPOWDER IC000238



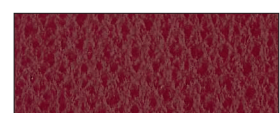
ENERGY IC000283



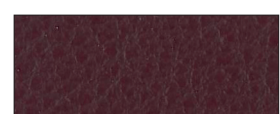
ANTIQUE IC000232



BLOOD IC000241



BOMBAY IC000234



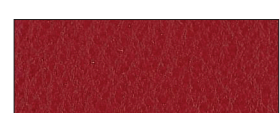
AUBERGINE IC000284



CARRUBO/BLACKLIGHT IC000236



WINE IC000242



PHONEBOX IC000288



SIAM IC000248



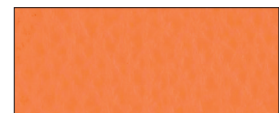
PARROT IC000247



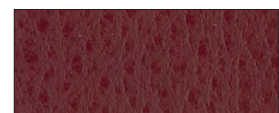
REDORANGE IC000245



CLAW IC000246



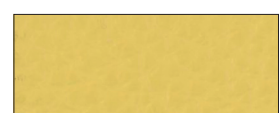
SUNSET BOULEVARD IC000244



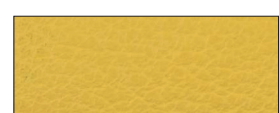
RIBES IC000235



PEACH IC000243



CHIQUITA IC000249



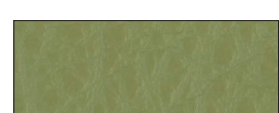
PERGAMENA IC000250



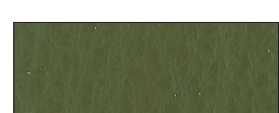
CARIOCA IC000251



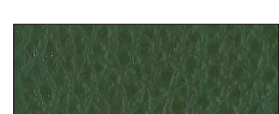
LEMON GRASS IC000287



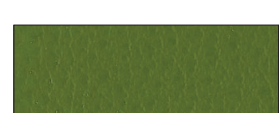
TARRAGON IC000255



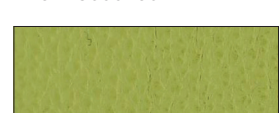
CAMOUFLAGE IC000257



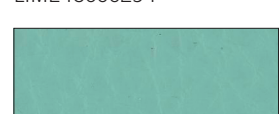
BIRCH IC000258



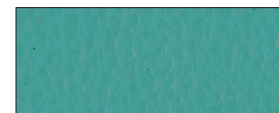
ALOE IC000256



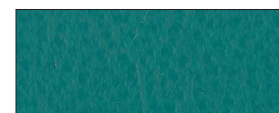
LIME IC000294



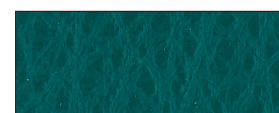
AQUA AZUL IC000264



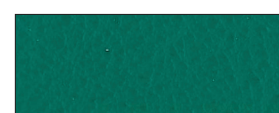
LICHENE IC000265



OTTANIO IC000266



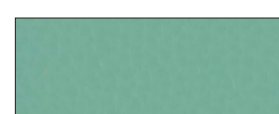
BLU PETROL IC000267



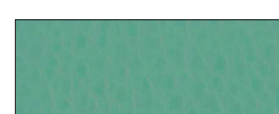
CEDAR GREEN IC000261



SUMMER BREEZE IC000263



MALDIVE IC000260



OXIDE IC000259



BOTTLE IC000262



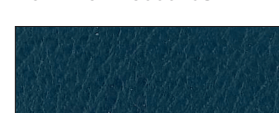
PACIFIC IC000270



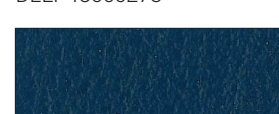
TURQUOISE IC000269



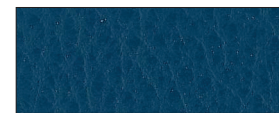
POLINESIA IC000268



DEEP IC000275



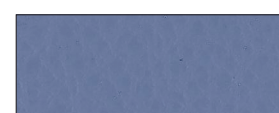
INDIGO IC000274



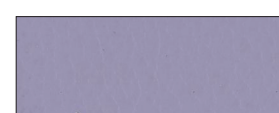
OCEANIA IC000291



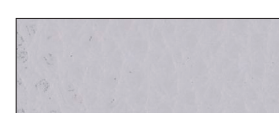
MATISSE IC000279



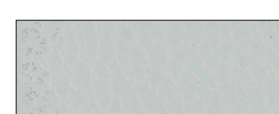
LAVANDER IC000282



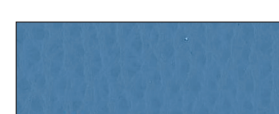
MILKA IC000281



WISTERIA IC000280



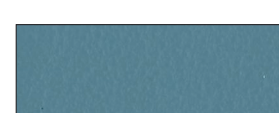
PLASTER IC000271



SANTORINI IC000278



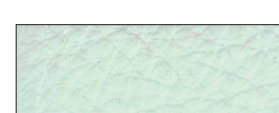
NORTH POLE IC000277



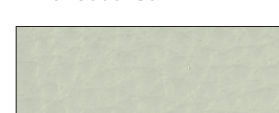
STEEL BIRD IC000273



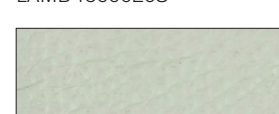
MORNING FOG IC000272



ZINC IC000286



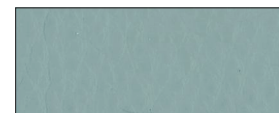
LAMB IC000208



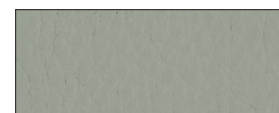
PEARL IC000202



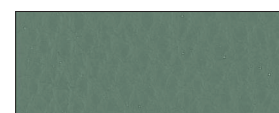
CINDER IC000205



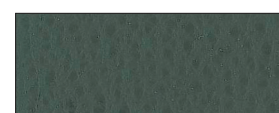
CIMENT IC000203



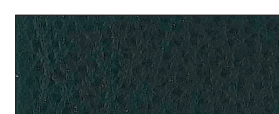
TURTLEDOVE IC000209



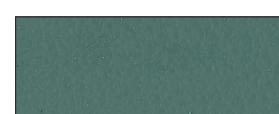
GRAYSTONE IC000210



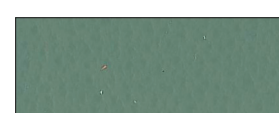
GRAYSHADOW IC000211



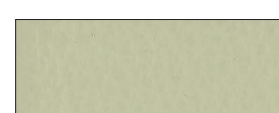
BLACK INK IC000207



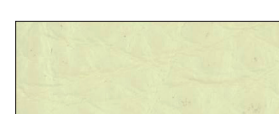
IRON IC000204



SMOKE IC000206



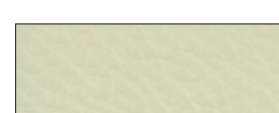
PAPYRUS IC000212



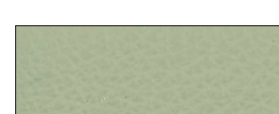
IVORY IC000201



PORCELAIN IC000290



PENICILLIN IC000253



MOUD IC000254

elegance



SKIPPER™
FURNITURE

LÆDER
LEATHER
LEDER
CUIR

DK

Elegance er et gennemfarvet semianilin læder med et "vokset touch" og med et halvblankt udseende.

TEKNISK SPECIFIKATION:

Råvare: Sydamerikanske kohuder

Egenskaber	Testresultater	Metoder
Tykkelse	1,2 – 1,4 mm	
Lysægthed	> = 5 (blåskala)	ISO 105 B 02
Gnidægthed, våd	> = 3/4 (gråskala)	ISO 11640
Gnidægthed, tør	> = 4 (gråskala)	ISO 11640
Rivstyrke	> = 20 N	ISO 3377-1

GENEREL INFORMATION:

Skippers læder er valgt med omhu for at harmonisere med vort design-koncept ergonomi, funktion og komfort. Læder er et naturprodukt. For at opnå ensartethed i kvalitet og udseende bliver alle huder nøje gennemgået, og kun de bedste dele bliver anvendt.

For at bevare læderets gode egenskaber bør møblet ikke placeres i nærheden af en varmekilde eller placeres, så det bliver udsat for direkte sollys.

Ved normal fugtighed behøver læderet ikke en speciel pleje, men vi vil gerne give følgende råd:

Fugt en klud i en mild sæbeblanding (sæbespånner i forholdet 1:10), vrid kluden og tør over hele møblet uden at gennembløde det.

UK

Elegance is a through dyed semi-aniline leather with a "waxed touch" and a half-shiny appearance.

TECHNICAL SPECIFICATION:

Raw material: South American cow hides

Properties	Test results	Methods
Thickness	1.2 – 1.4 mm	
Light fastness	> = 5 (blue range)	ISO 105 B 02
Wet rub fastness	> = 3/4 (grey range)	ISO 11640
Dry rub fastness	> = 4 (grey range)	ISO 11640
Tear strength	> = 20 N	ISO 3377-1

GENERAL INFORMATION:

SKIPPER's leather was carefully selected to harmonize with our design concept of ergonomics, function and comfort. Leather is a natural product. In order to obtain homogeneity in quality and appearance all hides are checked with care, and only the best parts are being used.

To maintain the good qualities of the leather the furniture should not be placed close to a heating duct or placed so that it is exposed to direct sunshine.

By normal humidity the leather does not need special maintenance; but we should like to give you the following piece of advice: Moisten a cloth in a mild soap solution (soap flakes and water 1:10), wring the cloth and wipe all over the furniture without soaking it.

D

Elegance ist ein durchgefärbtes Semianilin-Leder mit einem "Wachsgriff" und mit halb blankem Aussehen.

TECHNISCHE DATEN:

Rohware: Südamerikanische Rindhäute

Eigenschaften	Testresultate	Verfahren
Stärke	1,2 – 1,4 mm	
Lichtechtheit	> = 5 (Blauskala)	ISO 105 B 02
Nass-Abrieb	> = 3/4 (Grauskala)	ISO 11640
Trocken-Abrieb	> = 4 (Grauskala)	ISO 11640
Reißfestigkeit	> = 20 N	ISO 3377-1

GENERELLE INFORMATION:

Das Leder von SKIPPER wurde sorgfältig ausgesucht, um mit unserem Designkonzept - Ergonomie, Funktion und Komfort - zu harmonisieren.

Leder ist ein Naturprodukt. Um Gleichartigkeit in der Qualität und im Aussehen zu erzielen, werden alle Häute genau geprüft, und nur die besten Teile werden verwendet.

Um die guten Eigenschaften des Leders beizubehalten, sollte das Möbel nicht in der Nähe einer Wärmequelle angebracht werden, und nicht direktem Sonnenlicht ausgesetzt werden.

Bei normaler Feuchtigkeit ist keine Spezialpflege erforderlich; wir möchten jedoch folgenden Rat geben:

Wringen sie ein Tuch in einer milden Seifenlösung (Seifenflocken und Wasser 1:10) und trocknen Sie das ganze Möbel ab, ohne es zu durchnässen.

F

Elegance est un cuir teinté semi-aniline avec une « touche cirée » et une apparence semi-brillante.

CARACTERISTIQUES TECHNIQUES :

Matière première : Peaux de vaches d'origine sud-américaine

Propriétés	Résultats des tests	Méthodes
Epaisseur	1,2 – 1,4 mm	
Résistance à la lumière	> = 5 (gamme bleue)	ISO 105 B 02
Résistance au frottement mouillé	> = 3/4 (gamme grise)	ISO 11640
Résistance au frottement à sec	> = 4 (gamme grise)	ISO 11640
Résistance à la déchirure	> = 20 N	ISO 3377-1

INFORMATIONS GENERALES :

Le cuir SKIPPER a été soigneusement sélectionné pour s'harmoniser avec notre conception de l'ergonomie, de la fonction et du confort.

Le cuir est un produit naturel. Dans le but d'obtenir l'homogénéité de la qualité et de l'apparence, toutes les peaux sont vérifiées avec soin, et seules les meilleures pièces sont utilisées.

Pour conserver les bonnes qualités du cuir, le meuble ne doit pas être placé près d'un conduit de chauffage ni placé de telle sorte qu'il soit exposé à la lumière directe du soleil.

Sous une humidité normale, le cuir n'a pas besoin d'entretien spécial ; mais nous aimerions vous donner le conseil suivant : Humidifiez un chiffon dans une solution savonneuse douce (paillettes de savon et eau à 1:10), essorez le chiffon et essuyez tout le meuble sans le tremper.